

How to Use the AI Cowculator App

The AI Cowculator allows producers to input their own inputs and is a decision aid tool to assist producers to determine whether they should consider TAI rather than purchasing herd sires for their cow herds. The application may be downloaded free of charge and is available on Apple Store and Google Play.



Click on the Icon to Download:



Figure 1. The front page of the AI Cowculator App

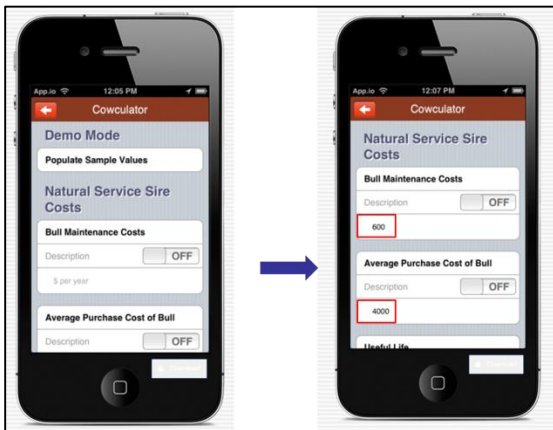


Figure 2. The AI Cowculator allows users to use sample values or enter their own values.

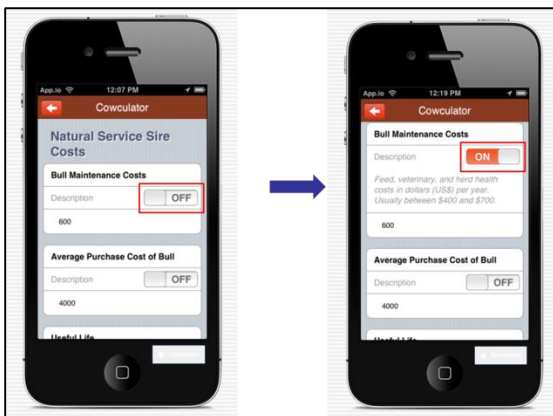


Figure 3. A toggle switch is included that when turned 'ON' defines the input value.



Figure 4. After all inputs are entered users will touch 'Cowculate' resulting in an output screen. A positive value (green) demonstrates that producers should consider TAI and a negative dollar value (red) indicates that producers should not consider TAI.



Figure 5. Other icons allow users to: 1) source AI technicians and suppliers of semen and estrous synchronization products (Locator icon); 2) find resources associated with reproductive management of beef cattle (Resources icon); 3) observe a gallery of pictures (Gallery icon); 4) be directed to the AI Cowculator social media sites, such as Facebook and Twitter (Social Media icon); and 5) access Youtube videos associated with the AI Cowculator including a tutorial (Youtube icon).