

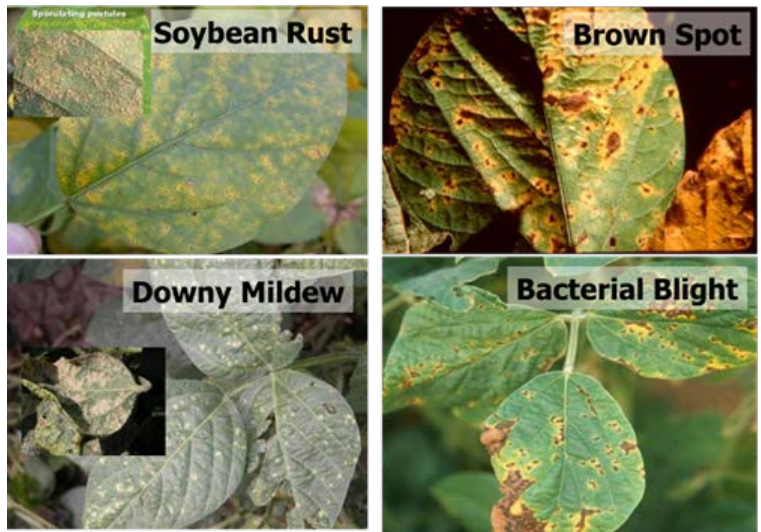
## Plant Disease Diagnosis

### Dates and Locations

- September 2017

### What You Will Learn

Participants will learn basic principles of plant disease diagnosis, field photography for identifying diseases, and best practices for sample collection for submission to disease clinics



### Topics

- Introduction to plant disease diagnosis and overview of information needed to identify plant diseases.
- Troubleshooting crop problems – how to distinguish plant diseases from plant nutrient deficiencies.
- Basic field photography to improve the success of long distance identification of diseases by experts.
- Identification of diseases on plant samples and in field plots.
- Preparation of plant samples for submission to clinics to ensure samples are suitable for expert diagnostics.

### Lead Instructors

Ian Small

### Additional instructors and coordinators

Mathews Paret, David Wright, Shep Eubanks, Barry Tillman, John Atkins, and Matt Orwat